

DCU12

is a portable color doppler, designed and produced by KAIXIN professional team. leading image process technical and advanced and practical clinic solution method. It's highly cost effective and reliability. It's the ideal option for primary hospitals, clinics, etc.



Full Digital Color Doppler System

Reasonable Humanization Design

- 10.4" color LED full screen display, angle adjustable
- One-key-light keyboard function for black room use
- One button operation including one-key storage image, one-key review, one-key print, etc.
- Quick look up stored image function, raise working efficiency
- Multi-functional knob design, realize one-key quick adjustment in multi-mode



Powerful Data Management

- Optimize checking image function, realize 1-2 second response
- Intelligent user defined, one-key review and storage function
- Neoteric internal workstation multi-plan module, quickly finish data, report, realize process multi medical histories function



Abundant Document Management

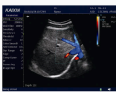
- I-Station integral work station, connect to network, realize one-key print
- Large internal 16G disk storage capacity, permanent massive storage, without loss when power off. BMP format image ≥10, 000 frames, PNG format image ≥100,000 frames



DCU12 Full Digital Color Doppler System

Completely Independent Intellectual Property, Master Core Technologies

- Transmitted signal accuracy control
- **Image**: image optimization imaging technique
- Adaptive color artifact removal technique
- linear probe independent angle deflection
- I-station integral working station
- Phase enhance harmonic
- Accurate vessel image
- Convenient and practical data management
- Abundant measuring software



Hepatic portal vein



Gall bladder



Arteria coeliaca

Standard Configuration

- Ⓞ Main unit
- Ⓞ 3.5MHz multi-frequency abdomen convex probe
- Ⓞ 6.5MHz multi-frequency trans-vaginal probe
- Ⓞ 7.5MHz multi-frequency linear probe
- Ⓞ Working station
- Ⓞ Reticle

Optional Configuration

- Ⓞ Trolley
- Ⓞ Foot switch
- Ⓞ Thermal printer (Sony UP-897MD)
- Ⓞ Ethernet switch

Probe Configuration



6.5MHz multi-frequency trans-vaginal probe



7.5MHz multi-frequency linear probe



3.5MHz multi-frequency abdomen convex probe

KAI XIN

XUZHOU KAIXIN ELECTRONIC INSTRUMENT CO.,LTD.

ADD:Kaixin Mansion, C-01, Economic Development Zone, Xuzhou, Jiangsu, China.
Zip Code: 221004
Tel: +86-516-87732932 / 87733758
Fax: +86-516-87732932 / 87792848
Http://www.kxele.com
E-mail:info@kxele.com / service@kxele.com

THE PRODUCT TAKES REAL OBJECT AS QUAREIF ANY FLUCTUATION HAPPENS.FORIVING NO ANOTHER NOTICE IN THE LINE.

DCU12

Full Digital Color Doppler System



KAI XIN

XUZHOU KAIXIN ELECTRONIC INSTRUMENT CO.,LTD.