



## TITAN

Anesthesia Vaporizer



 Safety

 Stability

 Versatility

## Stability & Safety

- Titan vaporizer easily provides the high dosage concentration required to achieve the shortest possible wash-in times during induction.
- Moreover, the unmatched dynamism of its flow and concentration ranges means the Titan1 vaporizer effortlessly complies with the demands of a minimal flow regime.
- The extended temperature range of 15°C - 35°C ensures the accuracy of concentration can be satisfactorily controlled even during extreme operating conditions. Increased capacity of the anesthetic agent tank (300ml) can now hold the entire content of an anesthetic agent bottle, leaving no waste and thereby saving your cost.
- Easy-fil, Key-fil, Quik-fil (SEV only) filler is designed to simplify agent filling and help minimize agent leaks while filling.

## Versatility

Titan vaporizer meet the different agent requirement: Enflurane, Isoflurane, Halothane, Sevoflurane. Titan 1 vaporizer can provide several mounting types: Selectatec Compatible, Draeger Plug-in, Cagemount (ISO23mm tapers).



Selectatec Compatible



Draeger Plug-in



Cagemount



Titan vaporizer can provide several filler types: Pour-fil, Easy-fil, Key-fil, Quik-fil(SEV only)

### Concentration range:

Enflurane	: 0.2-5%
Isoflurane	: 0.2-5%
Halothane	: 0.2-5%
Sevoflurane	: 0.2-8%

### Mounting type:

- Selectatec compatible
- Draeger plug-in
- Cagemount

### Filler Type:

- Pour fil
- Easy-fil
- Key-fil
- Quik fil (SEV only)

### Filling volume for agent:

- About 340 ml with dry wick
- About 300 ml with moist wick



Pour-fil



Easy-fil



Key-fil



Quik-fil(SEV only)

Temperature	Moisture	Flowmeter	Barometric	Storage temperature
+15°C - +35°C	0%-95%	0.2-15 L/min, 0.2-10 L/min (For concentration > 5%)	70 kPa-106 kPa	-40°C - +65°C

### Accessories

- Adapters
- Easy-fil
- Quik-fil(SEV only)
- Conform to Standards ISO 8835-4
- 93/42/EEC Agent specific filling system ISO 5360

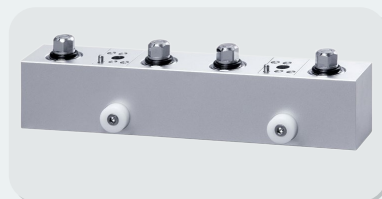


### Mainfold

- Selectatec(Single station)
- Cagemount

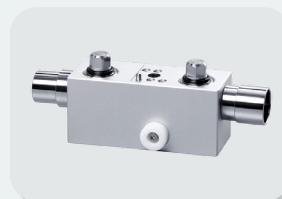


Selectatec (Single station)

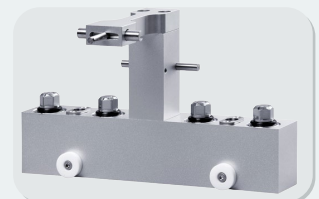


Selectatec (Two station)

- Selectatec(Two station)
- Draeger Plug-in



Cagemount



Draeger Plug-in



## **THE ART OF BREATHING**

### **AtlantaMed Limited**

Unit 2 Kingsmill Business Park, Kingston KT1 3GZ London, UK

+44 20 3417 9600

[info@atlantamed.co.uk](mailto:info@atlantamed.co.uk)

<https://atlantamed.co.uk/catalogue>