

MANUFACTURE STANDARD, MANUFACTURE RELIANCE

# RT-6100

## Microplate Reader



### WHAT'S NEW

PC CONTROLLED

WORKSTATION SOFTWARE

USB PORT



### Features

- PC controlled system, Windows XP.
- 8-channel optical fiber system enables 5 secs' reading for 96 wells plate.
- Calculation modes include ABS, Cut-Off, Curve, Linear, Log, Exponent, Power and 4PL Regression.
- Up to 12 different tests can be performed in a single plate.
- Powerful laboratory management software to store more than 100 programs, 100,000 results.
- Powerful QC programs including Westguard rules and Instant method, automatic alarm.
- Multiform test reports output.
- Lamp saving and plate shaking feature.
- Save data automatically when power off unexpectedly.
- Compatible with all external printers supported in Windows.
- Powerful internet connection enables remote data sharing and OS update.
- Standard English or Multi-language software available on request.

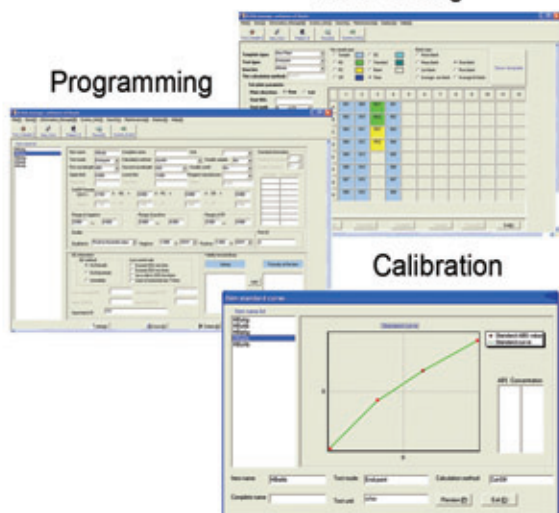
# RT-6100

## Microplate Reader

### Main Specifications

Absorbance Range	0 - 4.000Abs
Resolution	0.001Abs(displayed),0.0001Abs(calculated)
Accuracy	±0.5% or ±0.005Abs
Type of Microplate	Standard with 96 microwells or other kind of microplate and strip
Optic System	8-channel optic fiber system
Light Source	Halogen lamp,8V/20W
Wavelengths	405, 450, 492, 630nm, 4 more filters optional
Wavelength Accuracy	± 1nm
Bandwidth	<8nm
Methodologies	End Point, Two Point, Kinetic
Calculation Method	ABS, Cut-Off, Single Standard, Curve, Multi-Percent, Percent Logarithm, Linear Regression, Logarithm Regression, Exponent Regression, Power Regression, 4PL Regression
Reading Speed	5 seconds for 96 well plate(single wavelength)
Shaking Plate	Shaking time and speed adjustable
Operation	PC operation, bidirectional communications
Memory	More than 100 programs, up to 100,000 test results
Printer	All printers compatible with Windows
Interface	RS-232, USB
Language	English or any language on request
Power Supply	AC 110V - 240V ± 10%,50-60Hz
Net Weight	7KG
Dimensions L × W × H(mm)	454 × 295 × 146

### Plate setting



### Report

Name:John	Sex:male	Age:25	Sample NO:005		
Medical NO: xxx	Section: xxx	Area: xxx	Sender:Lisa		
Bed NO:008	Diagnosis:		Send date:20/10/2006		
Program	Full name	Result	Unit	Neg/Pos	Reference range
HbsAg		0.168	s/cov.	Neg-	0.000-1.000
HbsAb		0.568	s/cov.	Neg-	0.000-1.000
HIV		0.685	s/cov.	Neg-	0.000-1.000
HCV		1.259	s/cov.	Pos+	0.000-1.000
Print date:20/10/2006		Test date:20/10/2006		Operator:	Checker:

**Rayto Life and Analytical Sciences Co.,Ltd.**  
 2nd Floor, 5th Building, Software Park, Keji Zhong  
 2nd Road, High-tech Industrial Park, Nanshan,  
 Shenzhen 518057, P.R. China  
 Tel: +86(755)88832350 86168182  
 Fax: +86(755)86168796  
 Email: info@rayto.com

